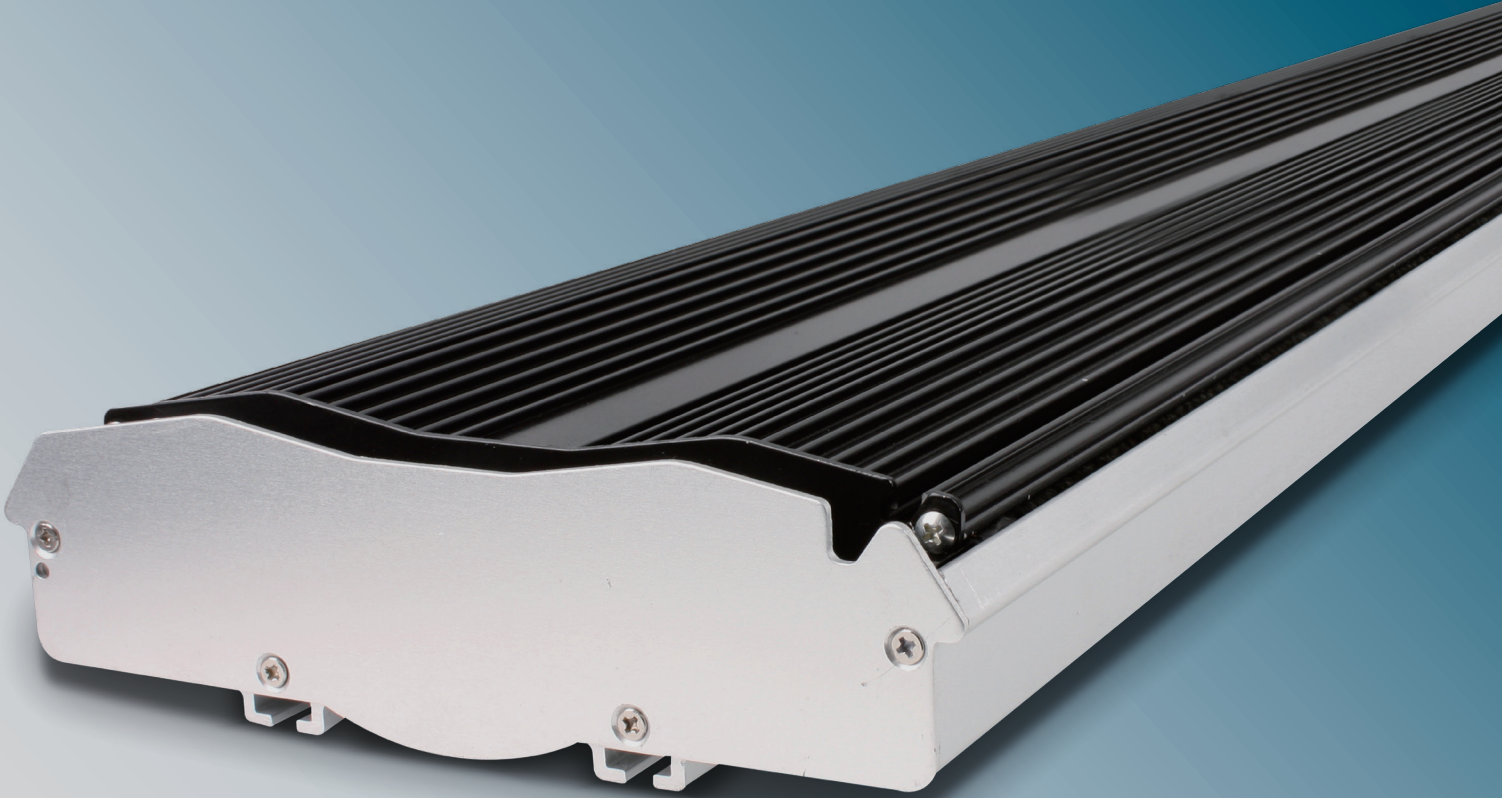


OUTDOORHEATING SYSTEMS

LEADER IN INNOVATION



ERH || ELECTRIC RADIANT
HEATERS

OUTDOOR RADIANT HEATERS



ERH || Electric Radiant Heating

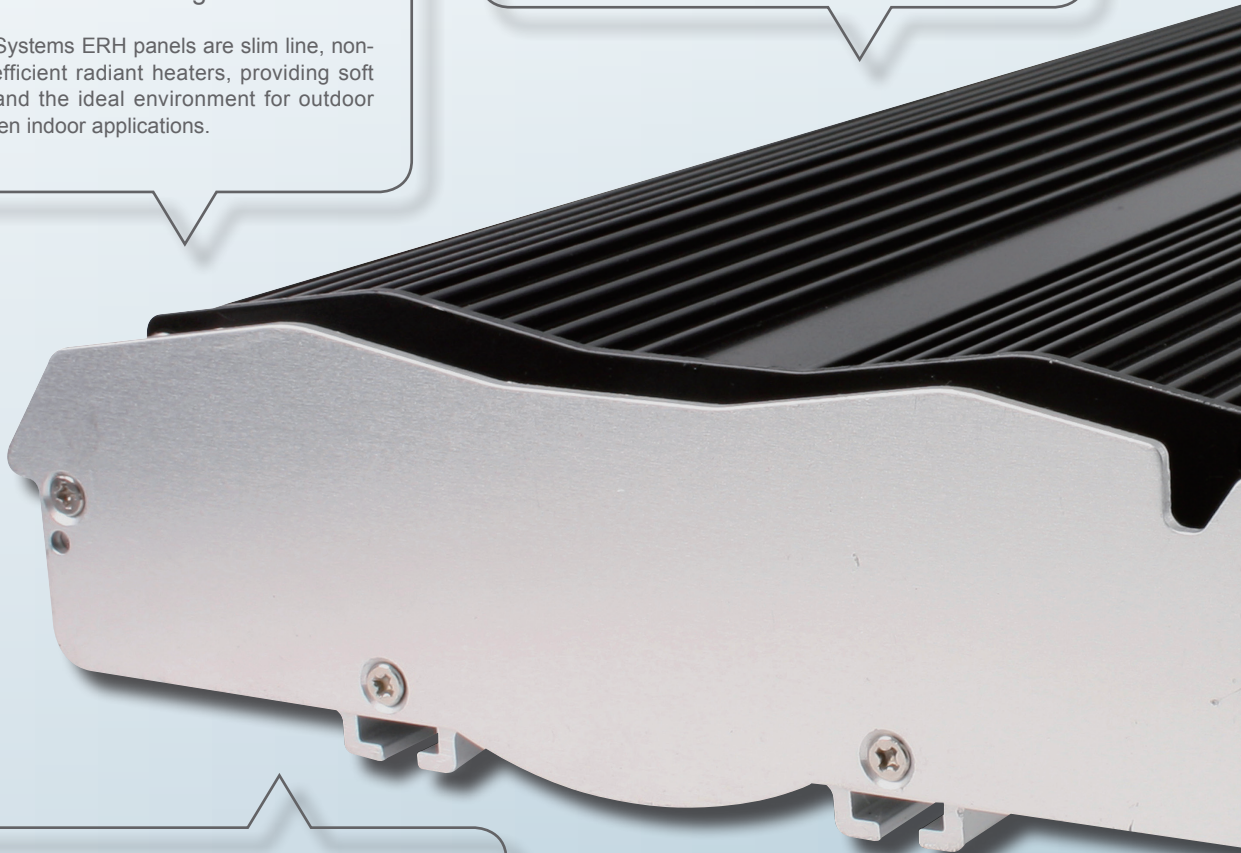
OutdoorHeating Systems ERH panels are slim line, non-glowing, highly efficient radiant heaters, providing soft radiant warmth and the ideal environment for outdoor undercover or open indoor applications.

IPX-4 Water & Thermal Cutoff Protection

Specifically engineered for undercover, outdoor applications, the OH-ERH range of heaters are waterproof to the point where you can actually hose them down and feature a thermal cutoff protection system.

Efficient, Elegant & Advanced

The unique high surface area of the heaters face and stainless steel heating elements ensure the OH-ERH provides rapid and even heat dispersion.



FEATURES AND TECHNOLOGY

Subtle, Unobtrusive Design

The slim line, black panels do not emit any light or glow when in use. We have however included a small red LED light at one end of the heater to allow a quick visual reference point whether the heater is ON or OFF.

No Internal Moving Parts - Silent Operation

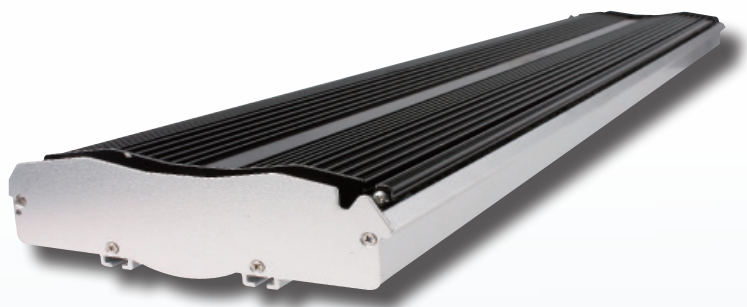
Avoid the distracting background noise that accompany other outdoor heating equipment. The OH-ERH heaters operate in complete silence.

Assured Reliability and Safety

Manufactured in a high tech factory located just outside of Vienna, Austria.

The outer casing of the OH-ERH is made from tough durable steel. The heaters face is crafted from a lightweight aluminium alloy extrusion. Both components are then treated with our E-Ceramic coating. The specialised coating provides excellent corrosion resistance against salty conditions.

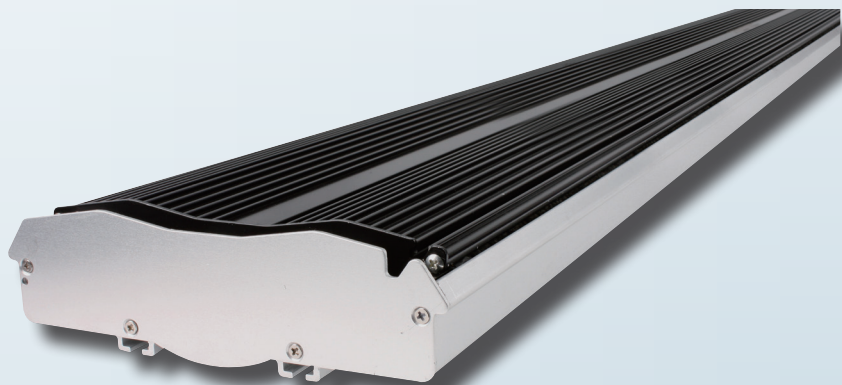
MODELS



OH-ERH-1000W	
Power	1000W
Dimensions	600 x 185 x 55mm

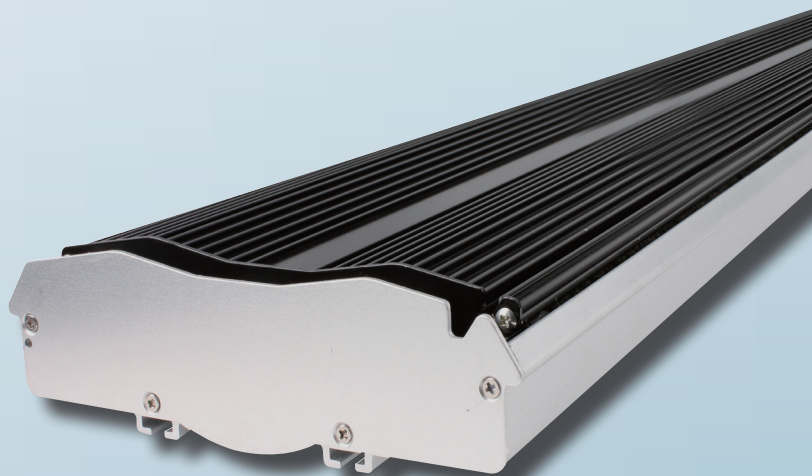


OH-ERH-1800W	
Power	1800W
Dimensions	1000 x 185 x 55mm



OH-ERH-2400W	
Power	2400W
Dimensions	1500 x 185 x 55mm

OH-ERH-3200W	
Power	3200W
Dimensions	2000 x 185 x 55mm



MOUNTING AND ACCESSORIES

LED

Visual Light

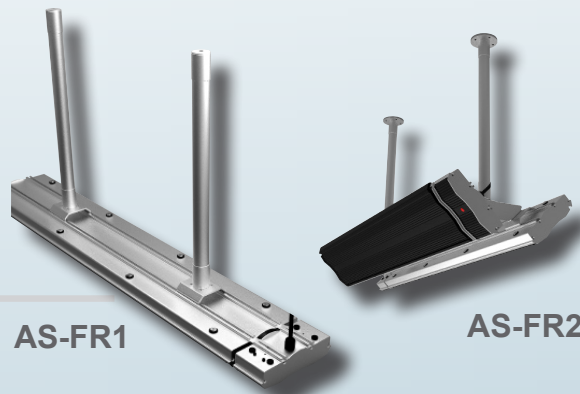
Easy reference to show product is switched on or off.



Mounting

Fixing rods

Aluminium fixing rods are available to hang the heaters from the ceiling, length 300, 450, 600mm includes mounting bracket.



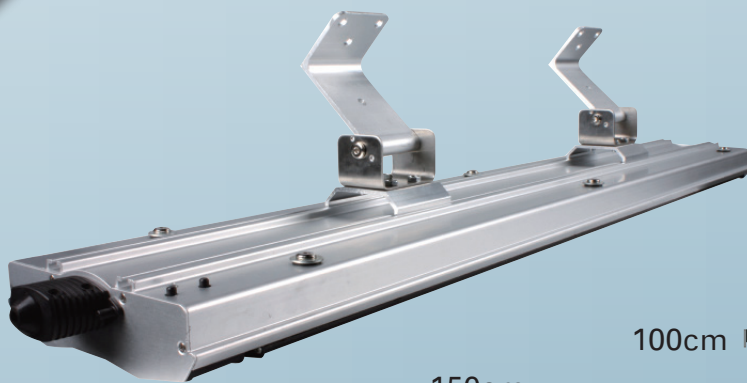
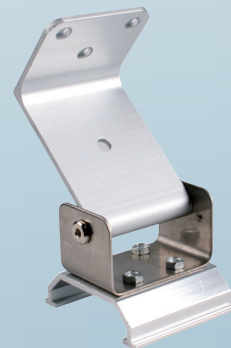
AS-FR1

AS-FR2

Mounting

Standard fixing brackets

Stainless Steel ceiling / angle mounting brackets are supplied as standard.



60cm  OH-ERH-1000

100cm  OH-ERH-1800

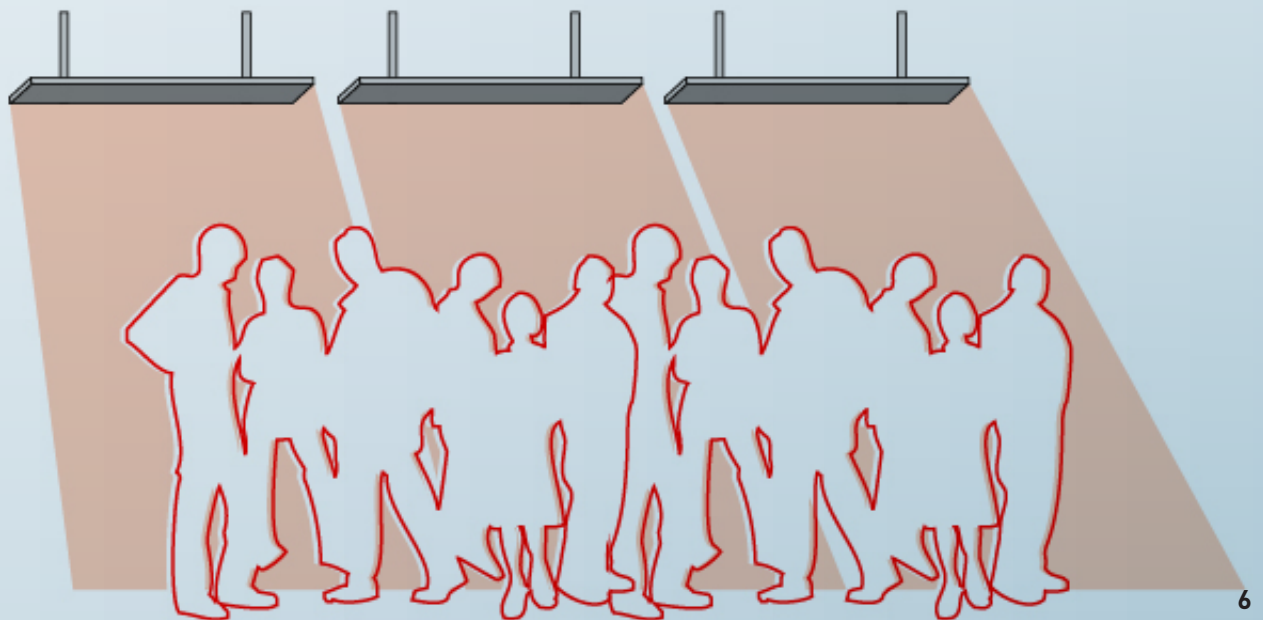
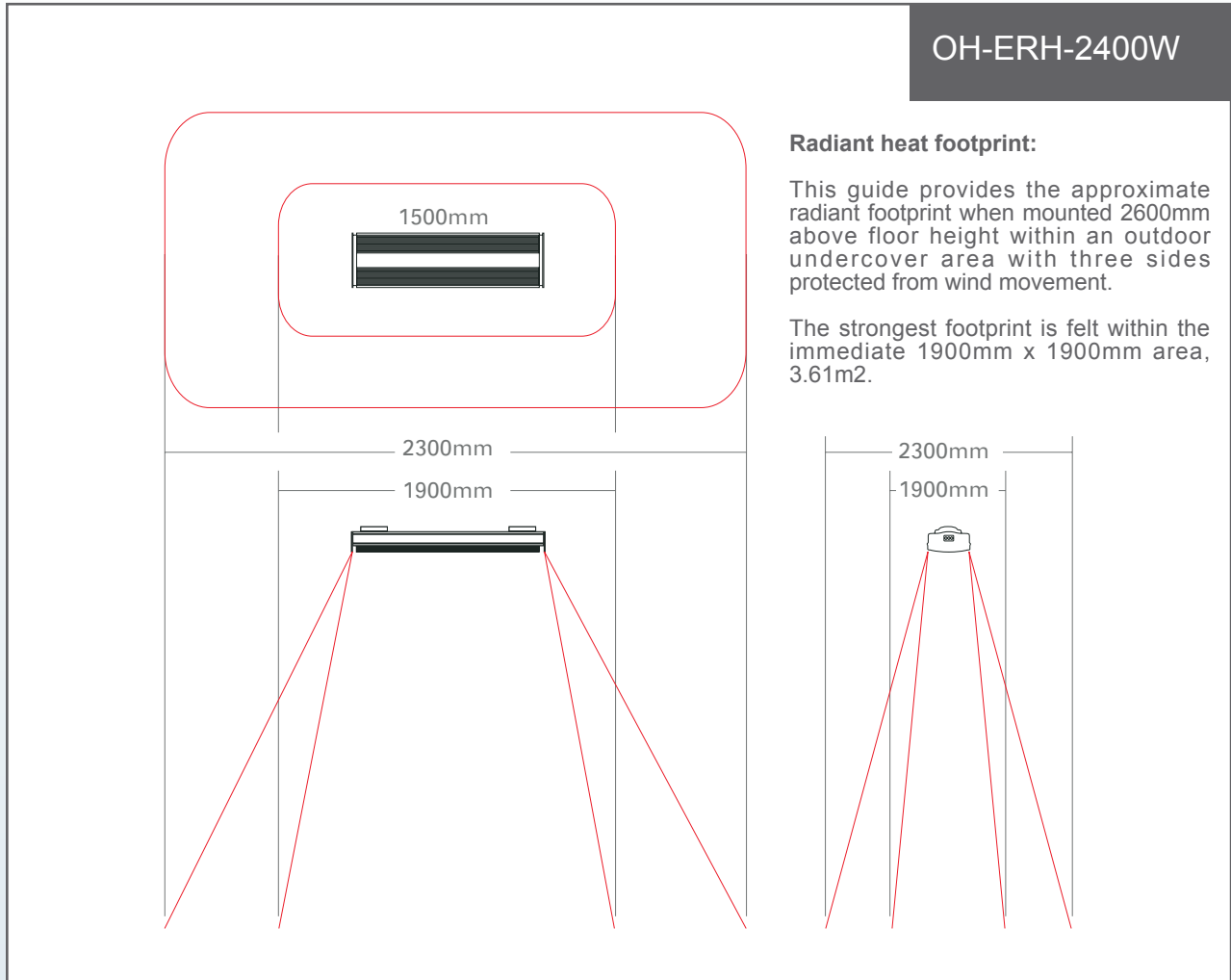
150cm  OH-ERH-2400

200cm  OH-ERH-3200

HEATING FOOTPRINT

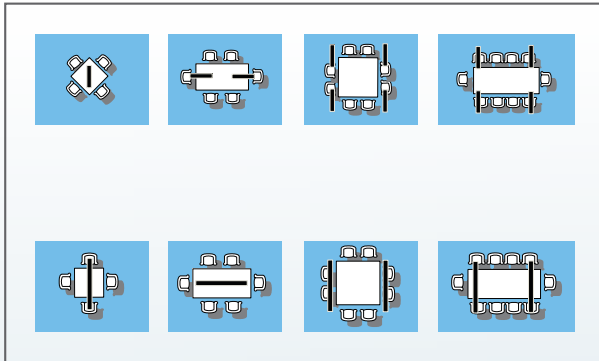
Mounting System: Stainless Steel ceiling / angle mounting brackets are supplied as standard.
Minimum Mounting Height: 2100mm above floor level.

Mounting height: 2300mm - 2700mm recommended. 3200mm maximum Installation height, in well protected areas.
The OH-ERH heaters are required to be fitted with an "ON/OFF" isolation switch, and must be earthed. An R.C.D (residual current device) is also recommended.



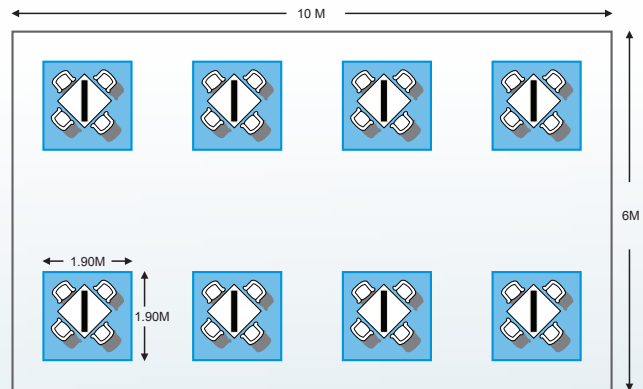
Residential outdoor setting guide

This guide provides the approximate number of heaters required to heat typical residential outdoor table settings, and is based on the OH-ERH-1800W heaters mounted at 2.6m above floor height within an outdoor undercover area.



Commercial spot heating example

Spot Heating each individual table using multiple OH-ERH-1800W heaters.



W/m2 quick calculation formula:

Well protected: 400W/m2 (minimum 3 sides protected)

Medium protection: 600W/m2 (minimum 2 sides protected)

Exposed sites: 800W/m2 (minimum 1 side protected)

Maximising heating performance

The major challenge for the effectiveness of any outdoor heating is wind. The chill of prevailing winds or breezes can counteract the radiant heat felt from the heaters. Ideally prevailing winds should be taken into consideration during design stages, including clear café blinds, glass partitions and barriers. To maximise the effectiveness of the OH-ERH heaters we recommend ceiling mounting directly above the area to be heated.

OUTDOORHEATING[®]

OutdoorHeating Systems

Outdoorheating.com.au

Head office:

Unit 16, 1-5 The Crescent

Dee Why, NSW 2099

Sydney, Australia

Tel: 1300 737 104 (Aus)

Tel: (+61) 421 798 594 (International)

E-mail: info@outdoorheating.com.au